

THE HGTV GUIDE TO COUNTERTOPS AND BACKSPLASH

8 iconic kitchens and how you can get the look too!

.01

Countertop:
White Quartz

Backsplash:
Fantasy Brown Marble
Full Backsplash



.02

Countertop:
Lennon Granite

Backsplash:
6"x12" Brown Glass
Subway Tile Backsplash



.03

Countertop:
Santa Cecilia White
Granite

Backsplash:
3"x6" Travertine and Her-
ringbone Glass Tile



.04

Countertop:
White Quartz Countertops and Full Backsplash.

Tip:
Continuing the material to
the backsplash creates a
minimalistic and seamless
look.



.05

Countertop:
Carrara Marble Counter

Backsplash:
4"x6" White Glass
Subway Tile Backsplash



.06

Countertop:
Taj Mahal Quartzite
Island & Honed Absolute
Black Granite Surrounding

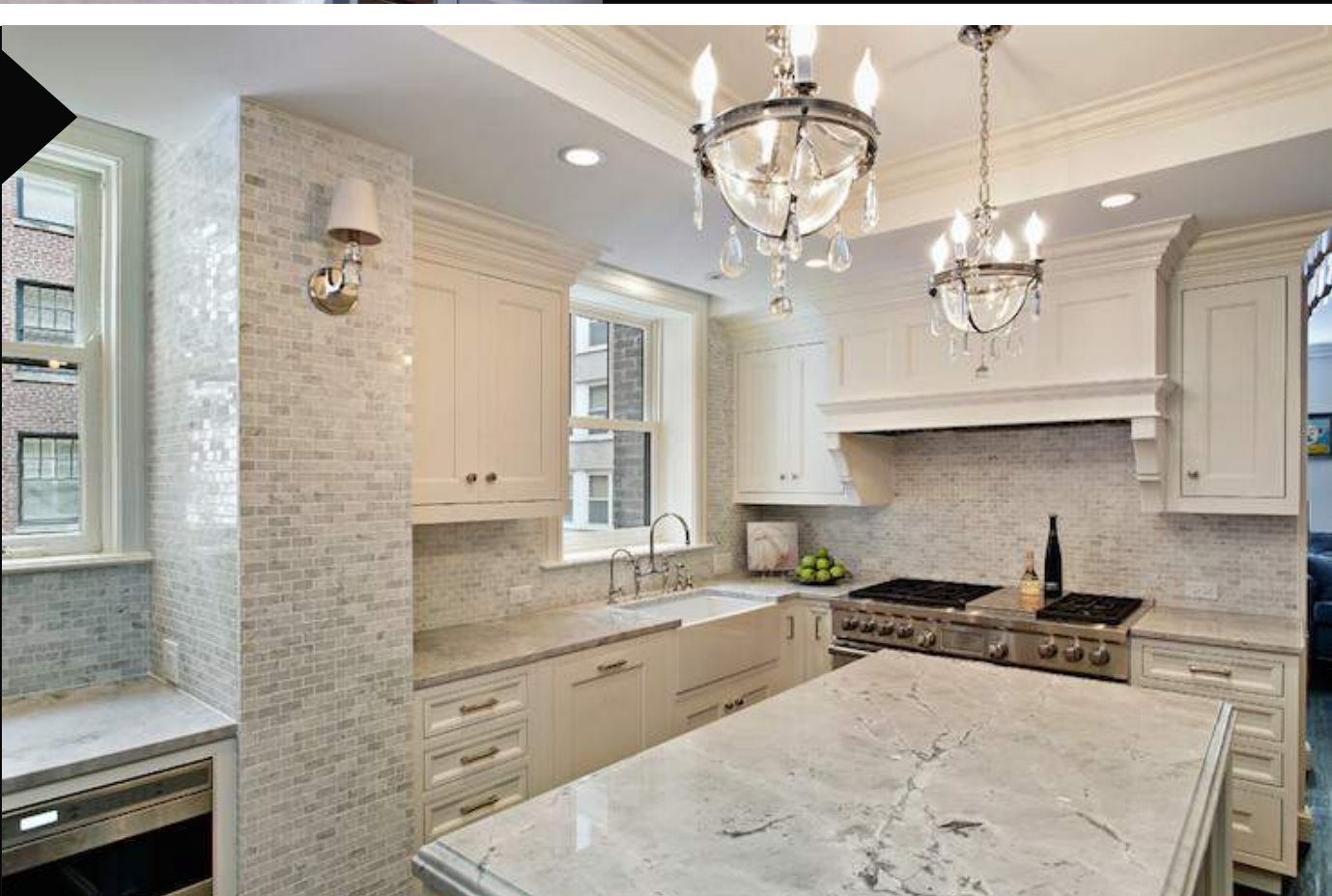
Backsplash:
4"x6" White Ceramic
Subway Tile Backsplash



.07

Countertop:
Super White Quartzite

Backsplash:
12"x12" Panels of Carrara
Marble Subway Tile



.08

Countertop:
Aria Quartzite Countertops with a Full Back-
splash

